

# WARRUGANG NEWS



June 2009  
Volume XLVIII No 2

## WAZZAT NUMBER AGAIN?

We've reinstalled the code lock on the winter entrance to improve security and a locksmith has made some improvements to the installation so there shouldn't be problems with the lock this winter.

Carl Banning has installed a sensor light so you can see the keypad.

The entry code will be advised to you by our booking officer (Kerry McEwan) when confirming your final payment. We suggest that you keep the number in your mobile phone contacts list.

Once it is unlocked the handle turns easily - so if it doesn't, please enter via the back door and tell David of the problem and we'll have the locksmith check it out.

## LODGE 2009

Thanks to the hard work of Peter Funnell (at the Lodge 3 times), Carl Banning and the working bee team of Gary Coffey & family and Melba Mensch, this season's changes are in -

- \* new ski racks, with translucent film installed on the 4 small windows in the new ski room as a security measure,
- \* new entertainment area downstairs with DVD player (rug & bean bags on the way),
- \* vented dryer in the laundry,
- \* some electrical maintenance (including fixing the dimmer in the lounge for the romantics),
- \* new lower power floodlight installed at the previously fire damaged area and the other floodlights checked for secure fixing,
- \* double towel rails installed,
- \* plastic stools in bathrooms,
- \* all heaters, lamps, power boards and appliances electrically tested and inspection tags affixed,
- \* aluminium splash rail hob installed at the basement shower to stop water spreading towards the toilet,
- \* larger open wardrobe fitted to room 5,
- \* broken window winders replaced,

- \* jammed windows fixed, &
- \* essential maintenance, including some painting, done.

Well done everyone—that's some list!

You'll also see new storage cupboards built so we don't store items in fire cupboards.

The 3 new beds were assembled by Peter and Carl in the rooms and at positions approved by the Department of Planning on the basis that we will use only 24 beds (including David & Cristina's allocation) at any time, so we have more booking flexibility.

National Parks have advised lodges that they intend to exercise their right of access and check accommodation compliance at each Lodge this winter. We can expect a visit from their inspectors seeking to ascertain all of the beds on the premises (they say some lodges have beds in laundries & storerooms) and checking their usage against our register.

However, NPWS have dropped their requirement that we record arrival and departure times.

## THE SEASON'S UNDERWAY

It's been an early start to the season this year, but it was a close call.

While there was a bumper early drop at the end of April, warmer temperatures meant that all those new snowguns weren't blazing as Perisher hoped they would in May.

Warrugang did its bit for the June long weekend Snowy Mountains of Music, accommodating some of the performers at the request of the Perisher Valley Chamber of Commerce. By all reports, the weekend was all the fun and enjoyment that had been hoped for - but, on the Saturday opening, the snow was confined to a small patch at the bottom of Front Valley.



Front Valley — 6 June

Of course, the rest of June is very quiet at Warrugang. But, as you'd expect, we're booked solid for the school holidays from 10 July - starting a week later this year. There's almost nothing left in the week before either.

Then, just a little after cue, on Sunday the falls started; with nearly 60 cm in the first week.

Perisher was able to validate "It's OK to come early - we're making snow on Mt P" campaign by opening Towers on the next weekend, with Blue Cow and Smiggin Holes the weekend after.



Front Valley — 10 June

We're bursting at the seams - all 22 beds full - for 27 days of the season so far and over 80% full from 4 July to 19 September. There's little space - if any - on the weekends.

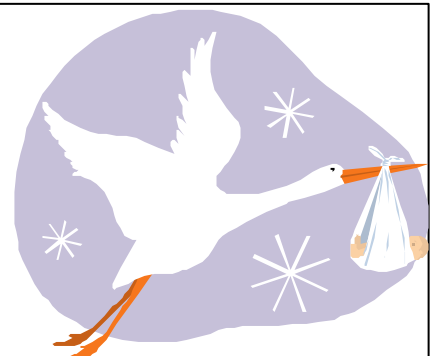
However, the week from Sunday 23 August is nearly empty! With "Froggy" Taylor, the Snowy's guru on snowfall prediction, saying it looks like "the best September since 2003", late August looks like a good bet.

You can check the vacancies at [www.warrugang.com](http://www.warrugang.com). When you do, you'll see "-2" on some of the days. That's because of the extra 2 beds - some weeks we're using every bed we can but, with Department of Planning approval received so late, we haven't had time to update the program.

## CRISTINA AND DAVID – FANTASTIC NEWS

Our Lodge managers for the past 10 years are to be proud parents around 20 September.

And what timing! It's the last week of bookings so far this year - we've got 14 in the Lodge that week, right up to 19 September; then no bookings until the end of the season. Congratulations!



Got something for Warrugang News?  
[timdoubleday@optusnet.com.au](mailto:timdoubleday@optusnet.com.au)

## OLD WARRUGANG NEWS AND PREHISTORY

Check vacancies at  
[www.warrugang.com](http://www.warrugang.com)

Don Barnes has spent, with some assistance from Mary, a huge amount of time back-capturing the old Warrugang News so we can place the archive on the website.

But we need photos to fill out this history - even though newsletter technology then made it impractical to add these into a newsletter, we can have separate pages for the photos of this era.

In particular we need photos of Warrugang and its members, particularly from 1961 to 1970. Indeed any pictures of Warrugang members from the 50's & 60's are most welcome. Please go through those old albums and see what you can find.

If you send pictures to Don Barnes at 1 Little Wonga Road, Cremorne, NSW 2090, they'll be scanned and returned with thanks.

To give us a sneak peek this season, Don has produced a loose binding of 2 books of old Warrugang News for the Lodge - covering the 1950's to 1964 - with a good quality printing and binding to be done later when the final version is complete. It'll be on the website too.

Don has also been working on "Prehistory" - what happened before Warrugang News.

I hope you share Don and Mary's (and your editor's) enthusiasm for retaining a record of the history of Warrugang from the pioneers who learnt to ski using the "descending the slope in a series of exuberant crashes" system - before there were any ski instructors or lifts, and who slept in either derelict Department of Main Roads huts or the back of a truck before building the first lodge. It's quite a story.

## PERISHER PRICING 2009

**SkiTube:** This year it's the same price each way uphill or downhill - adult \$39 & child \$22. Only \$27 (actually for a return ticket!) for those arriving early to ski the whole day and who buy their ski pass at Jindabyne or Bullocks Flat or who have a season pass. A good deal if it fits your plans.

**Lift Passes:** While a day pass has now broken the \$100 barrier, there are some specials. There's the usual "Ski Sunday Afternoon for Free" - if you purchase any 5, 6 or 7 Day pass starting on a Monday, mountain access is valid from 1pm on the prior Sunday. That seems to be a good deal.

There's also—

- \* Free Night Skiing for Children with a valid Mountain Pass.
- \* Free Mountain Pass and SkiTube travel for children 5 years and under.

Again this year, Perisher has tried to entice you to pay \$47 for the "Perisher Card". With this card, the adult day ticket is reduced to \$86 on Friday to Sunday and \$82 on Monday to Thursday, with the 7th and 9th days for \$43. You can also buy a discounted day ticket for a friend at \$86 and \$23 same day return SkiTube travel when purchased with a lift ticket. There are also reductions for children. This might be of value if you ski less than 12 days (when an early bird season pass comes into its own), but you need a spreadsheet to work out the possible options - particularly when comparing it to the 5, 6 & 7 day pricing. As always, conditions apply.



## SKI STORAGE IMPROVEMENTS

Over the last summer, there were a very large number of skis - mostly unidentified - left in the garage and the storage area behind it together with other equipment, such as boots. Some of the items have been placed on top of other items or on shelving, creating a precarious situation for our managers and those trying to retrieve their items.

During summer 2009/2010, we plan to clean up and generally improve the garage and the storage area so as to improve safety, make better use of the space and revitalise the ski bench work area.

Once that is done it is expected that there will be sufficient room and appropriate racks for the storage of skis over summer by members and associates from summer 2010/2011 - as well as better storage for the items used by our Lodge manager.

To do that we need to have all skis and other items removed from the Lodge by the end of the 2009 ski season so that the working party can safely have a fair go at the area and spend their time improving it.

So, please don't leave skis and other equipment at the Lodge this summer - if you do the items will be disposed of by being sent to the tip!

Ok, so that's pretty harsh; but we do hope we've got everyone's attention as we need to ensure the safety of our managers & working party — and have the workers spend their time improving the area, rather than shifting skis and boots around so they can do their work — and we are hopeful that those words will persuade members to help us to help them.

The storage of skis over summer from 2010/2011—

- \* Will be a facility for members and associates only, not friends.
- \* Will require that the skis be identified with the member/associates name, address & telephone number.
- \* Will be at the storer's risk - Perisher has burglaries and thefts throughout summer and we experience some water penetration at the back of this area of the building. Warrugang has no insurance to cover the risk for members or associates items left at the Lodge and will take no responsibility for the items.



Perisher in Summer — photos by Gary Coffey

## **SHORT PLANKS**

### **AGM**

We just made the quorum when Sally Priddle came through the door following a last minute call. We were only a couple of minutes from having to dissolve the meeting under the constitution and adjourn for 2 weeks, which would have been quite an inconvenience for those members who had attended expecting the meeting to be concluded on the night.

Thanks to all who attended, and for their patience while we worked to gather 20 members

We really need the Sydney members to help us get through our AGM easier next year.

### **Member List**

The annual (although not for a few year's) list is included with this newsletter.

### **Perisher Signs Lease**

Perisher has reached agreement with the NSW government on consolidation of its leases in Perisher, Blue Cow, Guthega and Smiggin Holes. The new leases are for 40 years with a 20 year option. As part of that, Perisher has relinquished the lease over the Perisher carpark.

Of particular, this resolves the short-term problem of Guthega, where the lease expired in 2013 – leaving little incentive for infrastructure improvements. Maybe that chair-lift all the way from below the poma to Mother-in-Law will now become a reality.

The State Government has said it will call for expressions of interest in developing the 800 bed village. Not the best time to be spruiking an investment but it's better late than never.

### **Improvement of Wheatley Road and Billy Button Place**

Next summer, National Parks are planning to seal the road in front of the Lodge (Wheatley Road) as far as Maranatha as well as the loop past Oldina (Billy Button Place). We're trying to persuade the gas supplier to run a reticulated gas line to Warrugang.

### **Kids Skid Lids**

At the AGM a member showed me a picture of kid's ski helmets with Warrugang across the front. They looked very good and it would be great to see young Warrugangsters in them.

Unfortunately, your editor's memory isn't sufficient to remember who it was. Please give Tim a call on 02 9400 9332.



**Some photos of the results of our working bee team's hard work**



## CLADDING UPDATE

In short, not a lot to say - yet. We're still working on it - trying to persuade the builder to correct the problems while looking at possible alternatives such as Stramit colorbond steel - and are still hopeful of a reasonable resolution for summer 2009/10.

The builder is taking a while to come to grips with the extent, the cause and the means to resolve the problems; but is also still working on it - having the ex-founder of the firm journey from Sydney to examine and report on the Lodge.

In the meantime, our maintenance team have battened down the edges of a few more sheets.

Of course, no reason not to enjoy the Lodge again this winter - it'll be great!



Easter Working Bee crew —  
Melba Mensch, Trina & Gary Coffey  
and Peter Funnell



Repainted  
railings

Some photos of the result of our working bee team's hard work

## DIRECTORS & OTHER OFFICERS 2008/09

If you've got a question, query or just a comment to make, please phone any one of us - but here's the specific areas we look after:

### President & Newsletter

Tim Doubleday (02) 9400 9332  
timdoubleday@optusnet.com.au

### Treasurer

Christine Jones (02) 6238 3701  
cjones@au1.ibm.com

### Lodge Operations

### Building & Maintenance

Carl Banning (02) 9520 7895  
carlbanning@bigpond.com

Peter Funnell (02) 9816 2121  
funn@bigpond.com

### Secretary & Club Captain

Hugo Loneragan 0416 172 476  
hloneragan@hotmail.com

### Membership

### Booking Officer:

Kerry McEwan (02) 9997 7446



New seat/extendable bed in  
room 4



Dryer in the  
Laundry

## HUMOUR

Some definitions—

**Atom Bomb:** an invention to end all inventions.

**Boss:** someone who is early when you are late and late when you are early.

**Compromise:** the art of dividing a cake in such a way that everybody believes he or she got the biggest piece.

**Conference:** the confusion of one multiplied by the number present.

**Criminal:** someone who got caught.

**Dictionary:** a place where success comes before work.

**Divorce:** future tense of marriage.

**Etc.:** a sign to make others believe that you know more than you actually do.

**Experience:** the name men give to their mistakes.

**Father:** a banker provided by nature.

**Life Insurance:** a contract that keeps you poor all your life so that you can die rich.

**Nurse:** a person who wakes you up to give you sleeping pills.

**Office:** a place where you can relax after your strenuous home life.

**Politician:** one who shakes your hand before elections and your confidence after.

**School:** where parents pay for a child to play.

**Smile:** a curve that can set a lot of things straight.

**Tears:** the hydraulic force by which masculine willpower is defeated by feminine waterpower.

**Yawn:** the only time some married men ever get to open their mouth.

**WARRUGANG NEWS** published by Warrugang Ski Club Limited  
ABN 23 000 145 193 GPO Box 1075 Sydney 2001 WWW.WARRUGANG.COM  
Lodge: Perisher Valley NSW 2624 (02) 6457 5215