

# WARRUGANG SKI CLUB LIMITED

Registered Office  
11th Floor, 170 Philip Street  
Sydney

Ski Lodge:  
Perisher Valley,  
Kosciusko National Park.



Please Address  
all Correspondence  
to the Secretary

Box 1075 G.P.O.  
Sydney, N.S.W. 2001

## NEWSLETTER - May 1980

Season 1980 is very fast approaching and in the newsletter we have outlined some exciting changes which have occurred both at Warrugang and in the Valley.

### BOOKINGS

There are still some vacancies for the June opening week-end (June 14th, 15th, 16th). If you want to start the season off with the traditional festivities please contact the Booking Officer.

### PEOPLE

- Jane and Michael Cruise will be our new managers for the season.
- Chris and Adrianna Blockley had a daughter, Natalie, on Good Friday.
- Chris Williams and Rosemary Sandow announced their engagement recently.
- Brian Budden married on April 12th.
- Len and Ann Bailey have recently added a daughter, Rowena, to their family of 3 boys.

### SPORTING

- A reminder that the clubs races will be held on August 2nd. It is intended that both cross country and alpine events will be held before lunch.
- A shelter for nordic skiers is being built in the vicinity of the old Valhalla stables. It will be named after Sverre Kaaten, a pioneer in Australian skiing. The project is desperately short of funds and should anyone wish to make a donation, please contact Ross Martin (02) 450-1573, Ric Macready (02) 31-2424, David Biggs (02) 449-6740 or Andrew Horsley (02) 85-1563.
- Perisher Smiggins Ski Racing Club are keen to hear from anyone who wants to ski better and faster. Contacts are Shirley Gosson (02) 328-7447, Ted Davis (02) 407-3183, Eric Erho (062) 58-1826 or Dave Ferris (0648) 22503.

### N.S.W. SKI ASSOCIATION

- The association now has a full time secretary, Liz Stack and is located at Sports and Recreation House 157 Gloucester Street, Sydney. The phone number is 241-1581.
- This years 1980 Ski Show will be held at the members stand, Randwick Racecourse, starting on 23rd and finishing at 6.00 p.m. on 25th May.

## SUGGESTION BOX

The board welcomes suggestions from members regarding improvements to the club. To ensure all suggestions are given full consideration, by the board, please drop us a note and post to the club's address.

## SCHOOL HOLIDAY ACCOMMODATION

The following guidelines have been established in respect to accommodation over the school holiday period.

If there are too many applications for accommodation in School holidays, then a ballot will be necessary and carried out as follows:-

- (a) Initially, only those members who have children in Year 7 and above or are teachers or whose spouse is a teacher and who did not gain accommodation in School holidays the previous year will be considered.

If the number of applicants exceeds the number of vacancies, a ballot will be held.

If the number does not exceed the number of vacancies, all will be allotted accommodation.

- (b) If vacancies still exist, consideration will be given to those applicants who gained accommodation in School holidays the previous year, and if required a ballot will be held amongst this group.
- (c) The ballot will take place as soon as practicable after opening date for members bookings.

NOTE Anyone missing out in the ballot will not get preferential treatment the following year as this could lead to a situation where there would be excessive numbers with priority.

- (d) Members must be financial before making a Booking.
- (e) To ensure the quiet enjoyment of our Lodge by all Members, children under 5 years of age are only allowed in the Lodge at the Booking Officer's discretion at the beginning and end of the Snow Season.
- (f) Would all Members please be sure to indicate children's age on Booking Forms so that compatable allocation of rooms can be arranged. It is also important to show if a child is working full time or is still a student and eligible for Student's rates.
- (g) Remember \$50 booking deposit per week is required for each person over the age of 8 years.

SOCIAL HAPPENINGS

The following social functions have been planned for members, their families and friends. I do hope you will be able to participate.

CHINESE 12-COURSE BANQUET: SATURDAY, 7 JUNE, 1980.

Will be held at the MING COURT CHINESE RESTAURANT, 308 New South Head Road, Double Bay. We meet for pre-dinner drinks in the bar at 7.00 p.m. and dinner will be served at 7.30 p.m. We are returning to this venue by popular request, but for those not fortunate to attend last year's, the evening was terrific, and the food delicious. It has been arranged that we each separately purchase our own wine of the evening. Please complete the booking slip below and return by May 30th to our G.P.O. Box, along with your cheque. I will not be forwarding tickets.

FAMILY BARBEQUE/PICNIC DAY: SUNDAY, 22 JUNE, 1980.

Will be held this year at the LANE COVE RIVER STATE RECREATION AREA at 10.30/11.00 a.m. Use the main entrance off Delhi Road and continue around to your left to Area No. 14 "Halfway Point". The entry fee to the park is \$1.00 per car. Maps of the park are available upon request at the main entrance.

ANNUAL DINNER DANCE AND PRESENTATION NIGHT: SATURDAY, 15 NOVEMBER, 1980.

Will be held again at the A.J.C. Centre, Randwick Racecourse. Details as previous, further information, including pricing etc. will be forwarded to you later in the year. Just an advance date for your diary so that no one double books.

POSSIBLE GOLF DAY, OCTOBER, 1980 - (NOT LONG-WEEKEND)

Am wondering how many golfers and would be golfers we count among our members and friends? I suspect quite a few. There is a really pleasant 18-hole, all par 3, golf course called "Tree Valley" on the Old Hume Highway, Prestons (couple of hundred yards past the Cross Roads Hotel at Liverpool). There are plenty of barbeque spots/picnic areas for lunch afterwards. The cost per player is \$3.00 and the course challenging for the serious golfer (as the name suggests) and quite unintimidating for the social golfer or first-time golfer. I have played there many times with friends who have never golfed before but who have thoroughly enjoyed themselves. I would suggest for our booking a Sunday morning with tee off about 9.30/10.00 a.m., it taking approximately 3½ hours to play the 18 holes. We could then finish off with a nearest-the-pin competition on the driving range and a barbeque. If you would be interested, please let me know either by a phone call or by completing the slip below and I will go ahead and book this.

I hope there is something in the above for everyone, and look forward to seeing you at the above functions.

Kaye Morrison  
Social Director (h) 546-4138

-----  
The Social Director, Warrugang Ski Club Limited,  
G.P.O. Box 1075, SYDNEY. N.S.W. 2001

Please reserve for me ..... places at the Chinese Banquet on  
Saturday 7 June at the Ming Court Restaurant, 308 New South Head  
Road, Double Bay.

I have enclosed my cheque for \$ ..... (\$12.50 per head)

NAME:

ADDRESS:

PHONE NO .....

NAMES OF PEOPLE IN MY PARTY:

(Christian names please for name tags .... )

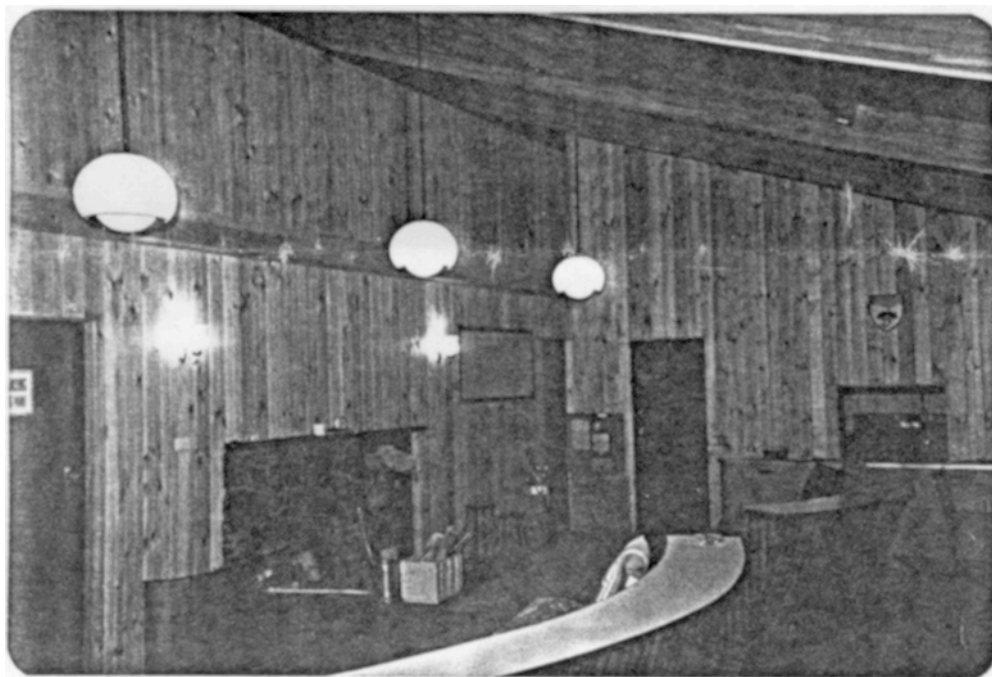
-----  
RE GOLF DAY: I would be interested in participating in a golf day as  
outlined above:

NAME:

POSSIBLE NO. OF PARTICIPANTS FOR GOLF? .....

## LODGE IMPROVEMENTS

Probably the first thing you will see will be the painted roof. This was a requirement of the National Parks and Wildlife Service and we chose the olive colour to blend in with the trees.



THE COMMON ROOM Gone now is that low, warped and shabby ceiling. In its place is a beautifully timbered ceiling which follows the roof line as depicted in the reproduction above. It is supported, together with the roof by four glorious laminated timber beams. With complete new wall linings to match (replacing the three different linings there previously), new hanging lights as shown and eyeball lights over the dining area the common room is now a real joy to be in. It has a spaciousness and attractiveness it never had before without in any way detracting from its functionalism or identification as Warrugang.

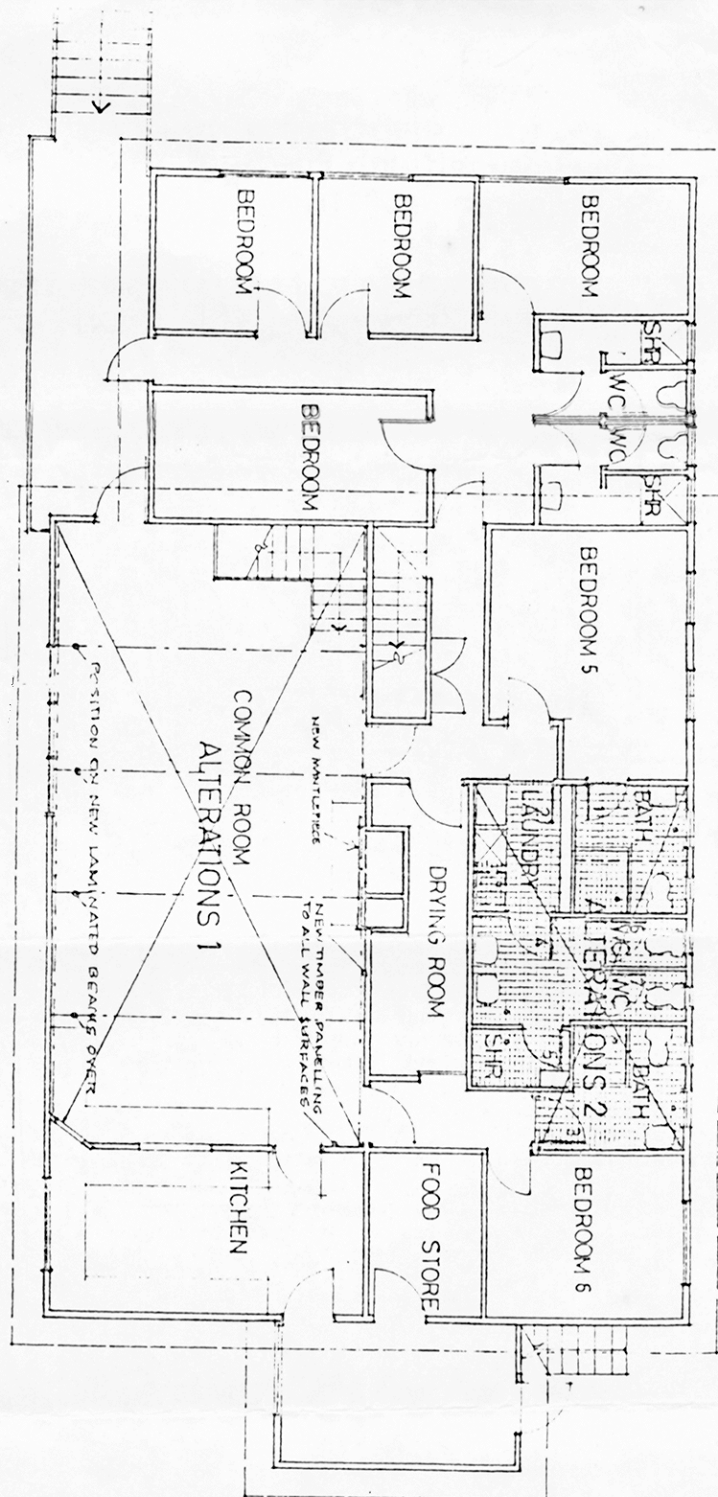
THE OLD BATHROOMS The old dormitory bathrooms are also gone with a complete remodelling of that central "ablution block". On the back of this sheet is a plan of the changes. Basically rooms 5 and 6 have been made en-suite whilst still providing general access shower and toilet facilities. A laundry area has been incorporated with a new wash tub and space for the existing spin dryer.

OTHER AREAS New carpeting is to be laid (before the season) in rooms 1 to 6 together with the connecting corridors on the ground floor. The retreat has been completed and decorated.

## VALLEY IMPROVEMENTS

The major improvement is the installation of a valley sewerage system - yes, a sewerage system. Warrugang has already been connected to the mains but we cannot use the facility until the pumping station and treatment plant are completed (as all the commercial lodges are hooked up they have to be completed before the season starts).

Access roads to the valley have been re-surfaced and there is a large new centre valley complex. We understand this will be full of shops just waiting to sell you things.



GROUND FLOOR PLAN

WARRUGANG SK/1  
CLUB



# WARRUGANG SKI CLUB LIMITED

Registered Office  
11th Floor, 170 Philip Street  
Sydney

Ski Lodge:  
Perisher Valley,  
Kosciusko National Park.



Please Address  
all Correspondence  
to the Secretary

Box 1075 G.P.O.  
Sydney, N.S.W. 2001

20th June, 1980

The following is a re-type of the National Parks & Wildlife Service Plan of Management Review for Kosciusko National Park which is a very important document as it affects us all in the long term and Warrugang Ski Club especially in the short-term as our ten-year option to renew our Lease with the Minister falls due on 1st January, 1981, just six months away. To this end the Board urges all members and friends of members who have an interest in the Lodge in particular and skiing in general, to take the time to write to the Minister and/or the Planning Officer of the Park and as many other relevant persons in authority as you can bring to mind to ensure that our existence as members of leased premises in the Park and followers of the sport of snow skiing is in no way jeopardised by the provisions of the Plan of Management. ACT NOW BUT NOT LATER THAN THE END OF JULY.

Attached to this re-type is copy of letter from a Mrs G. Thaurer on the same subject which urges all skiers to take action and forward their comments to the authorities.

---

## THE MANAGEMENT TASK

The 1974 plan of management for Kosciusko National Park is now under review.

The preparation of a plan of management is a requirement of the National Parks & Wildlife Act 1974. The Act specifies that the following objectives have to be taken into account:

- The conservation of wildlife.
- The preservation of the National Park and the protection of its special features.
- The prevention of any works that adversely affect the natural condition and special features of the National Park.
- The encouragement of the appropriate use of the National Park.
- The appropriate use of the National Park by lessees and licensees or occupants.
- The preservation of the National Park as a catchment area.
- The protection of the National Park against fire and erosion.
- The setting apart of wilderness areas.

The purpose of a plan of management is to identify how the various recreational, scientific and educational activities are to be accommodated, and how the National Parks & Wildlife Service is to manage and protect the special natural features of the Park.

Why review the existing plan? Major concerns which have grown over recent years call for new planning - the pressure of increasing numbers of visitors to the Park, the problems associated with accommodation facilities and traffic, and the effects that all these and other pressures have on the Park's natural features.

We hope that you will share not only in the appreciation of this outstanding National Park but also in the responsibility of protecting it for future generations by commenting on some of the issues raised.

This brochure is the third in a series which will present the key management issues under review. Its focus is on the ski resorts within Kosciusko National Park.

## THE SNOWFIELDS - SNOWFIELD RESOURCES AND ALPINE SKIING

The National Parks & Wildlife Service recognises that Kosciusko National Park is the only area within New South Wales that can cater for skiing. It contains all of the snowfields of the State and about half of the total snowfield resource on the mainland.

To provide opportunities for skiing, six ski resorts have been developed within the snowfields of Kosciusko National Park. They offer an exciting range of skiing experiences in different settings.

However, the snowfields of Kosciusko are not just for skiing. Development for skiing must be made in a way which does not compromise other important values of this special area. The Kosciusko snowfields constitute the largest and least disturbed alpine and sub-alpine nature conservation resource in Australia, and the

outstanding scenic qualities of the mountains are stark contrast to an otherwise flat and arid continent. The snowfields are the water catchment area for the Snowy Mountains Scheme, the largest and most complex water storage, diversion and power generation scheme in Australia.

Management of Kosciusko National Park thus requires a clear commitment to protect its special natural values, as well as to provide a broad range of opportunities for recreation. The international significance of Kosciusko National Park recently led to its declaration by UNESCO as an International Biosphere Reserve. The careful management of Kosciusko National Park is now a responsibility of international dimensions.

The National Parks & Wildlife Service is committed to providing the opportunity for a broad range of winter and summer recreation activities. The facilities needed for alpine skiing are more difficult to provide without conflict with nature conservation objectives than is the case with most other recreation activities in the Park. Alpine skiing facilities are best provided at carefully planned resort locations where quality skiing opportunities are available, and where infrastructure costs and environmental modification can be minimised.

The ski resorts are an integral part of the National Park, and the development and management of them will be carefully related to the management of surrounding areas. Within the resorts, some environmental modification for essential facilities is inescapable, but a major constraint in the design and implementation of facilities and infrastructure will be the protection of scenic and nature conservation values, both at the site and elsewhere. The National Parks & Wildlife Service seeks to see the highest possible standard of design and functional efficiency in the ski resorts, and to protect the many important natural features which occur in all areas within the Park.

#### DEVELOPMENT OF SKIING

Alpine skiing in Australia originated at Kiandra during the gold rush days of the 1860's. Skiing in the Mount Kosciusko area gradually developed from about the turn of the century. The early touring and exploring activities eventually led to racing, jumping and the use of ski tows.

The opportunity for commercial ski-field development was first provided by the then Kosciusko State Park Trust during the early 1950's. The main period of ski resort development took place in the 1960's as lifts, car parks, accommodation and servicing facilities were provided at Guthega, Smiggin Holes, Perisher Valley, Thredbo and Charlotte Pass. Recent years have seen the continued expansion of skiing facilities, including a new day-use ski resort at Mount Selwyn.

The National Parks and Wildlife service prepared a plan of management for Kosciusko National Park in 1974 which provided guidelines for ski resort development. It is this plan which is currently being revised and updated. (Other brochures giving details of the plan of management review are available).

Today, the ski resort areas within Kosciusko National Park provide many opportunities for visitors:

**MOUNT SELWYN:** The newest of the ski resorts, this area provides alpine ski lifts for beginner and family skiers, rest and shelter facilities, emergency services, ski instruction, ski rental, toboggan slopes, a food outlet, car parking and nordic ski trails.

**SMIGGIN HOLES:** Provides alpine ski lifts, marked nordic ski trail, toboggan slope, vehicle parking, food outlets, ski rental, ski instruction, restaurants, shops, entertainment, emergency services, shelter and rest facilities and accommodation. It caters for large numbers of day visitors.

**PERISHER VALLEY:** Provides many alpine ski lifts, marked nordic ski trails, areas for tobogganing, vehicle parking, food outlets, shops, ski rental, ski instruction, shelter and rest facilities, restaurants, entertainment, public oversnow transport, emergency services and accommodation. It caters for large numbers of day visitors.

**GUTHEGA:** Provides alpine ski lifts, rest and shelter facilities, food outlets, vehicle parking, ski instruction, accommodation and emergency services. This smaller resort caters for some day visitor use.

**THREDBO:** Provides many alpine ski lifts, rest and shelter facilities, vehicle parking, toboggan slopes (when there is snow down to the village), food outlets, shops, accommodation, restaurants, ski rental, ski instruction, nordic skiing, entertainment, summer recreation facilities, (barbecue sites, tennis courts, nature trail, golf course, etc.) and emergency services. During the peak ski season it caters for large numbers of day visitors.

**CHARLOTTE PASS VILLAGE:** Provides alpine ski lifts, accommodation, shelter and rest facilities, ski hire, ski instruction, nordic skiing, food outlets and emergency services. All visitors arrive at the Village either by oversnow transport or on cross-country skis.



## THE PLANNING ISSUE

Snowfield use has continued to expand to the stage that existing access, accommodation, and ski-field facilities will reach saturation point in the near future.

In considering the future management of the snowfields, the following are overriding considerations:

Because of the Park's international importance there must be a limit to which development can be permitted.

Use of the park should be available to as wide a range of visitors as possible and not be restricted to specific sections of the community.

Economic constraints will dictate the extent to which public funds will be available for road construction and provision of new services.

The community will not accept continued disturbance of the park's fragile alpine and sub-alpine area.

## SKI RESORT MANAGEMENT

### THE FUTURE OF WINTER RECREATION

In the immediate future, planning by the National Parks & Wildlife Service is directed towards the following objectives:

To maximise and diversify opportunities for winter recreation.

For many Australians, snow is beyond the normal range of their experience. Better facilities will need to be provided, in resorts and elsewhere, for those people who may wish to enjoy snow but do not require the provision of alpine skiing facilities. The new draft plan will indicate where these facilities will be provided.

To minimise the environmental impact of alpine skiing facilities.

The special natural values of Kosciusko National Park are far too important for the expansion of alpine skiing facilities to continue indefinitely. A limit of such expansion will be determined by detailed investigations, the nature of which will be specified in the new draft plan.

Existing facilities within established resort areas need to be more efficiently used to maximise alpine skiing opportunities with the minimum of environmental modification.

New alpine skiing facilities within established resort areas will be limited to those required for day use, to provide more recreational opportunities for a greater number of people, while minimising impact on the environment.

The National Parks & Wildlife Service is also considering three new areas which may be suitable for carefully planned alpine skiing facilities. Although further detailed studies are required before a decision can be made, the Service is obtaining public comment on these three possibilities: (see map)

1. Tooma Dam area. The Service envisages low-key facilities for beginner and family skiers in this area, thereby providing people from west of the Park with much better access to the snow. It is considered that the facilities appropriate to such a resort would be simple rope tows, barbecues, a car park, public toilets and shelters. The proposal would be dependent on resolving such problems as snow clearing and visitor safety.
2. Kings Cross: Kings Cross is approximately two kilometres south west of Mount Selwyn. It is envisaged that a small day-use ski resort could be developed here which would provide for beginner to advanced skiers. This proposal would be dependent on resolving problems such as its effects on the landscape (especially as seen from wilderness areas), access, snow clearing and the provision of services. The design of all facilities would have to be environmentally acceptable.

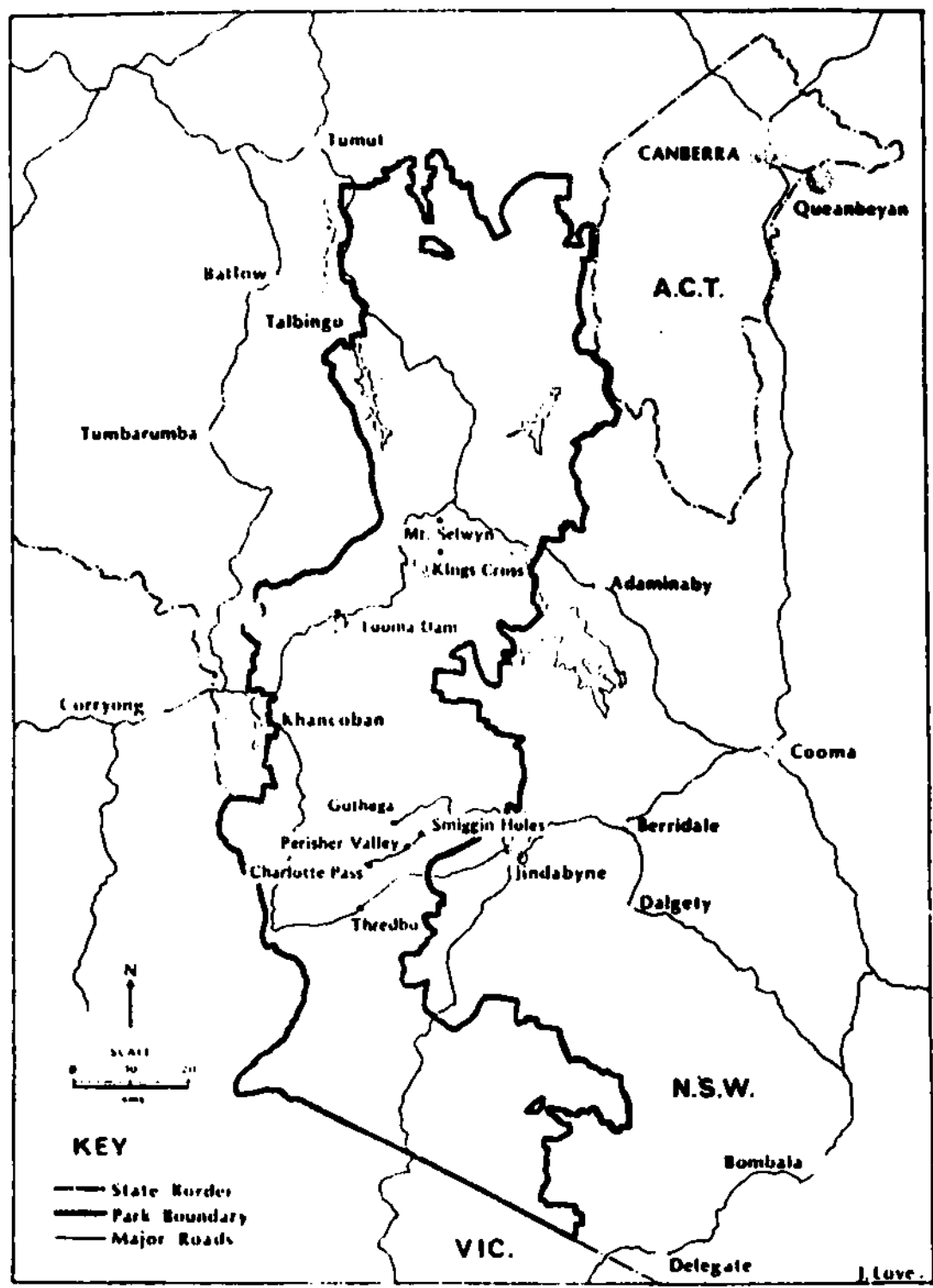
## ACCOMMODATION

Accommodation within the ski resorts is one of the major causes of damage to the National Park environment. Site disturbances, services such as power, water, communications and heating fuel, access to and within the resorts, and the removal of garbage and sewage are all major problems, particularly in the sub-alpine environment.

Some increase in accommodation in the established resort areas will occur as the result of existing commitments.

The National Parks & Wildlife Service recognises that accommodation within the resort areas is not essential to the pursuit of winter recreation. In view of this, and to minimise environmental impact, the only additional accommodation that may be provided is that required for essential servicing staff.

KOSCIUSKO NATIONAL PARK



## ACCESS

At present rates of growth Kosciusko Road, which provides skier access to Guthega, Smiggin Holes, Perisher Valley (and indirectly to Charlotte Pass Village), will reach its vehicle carrying capacity within the next few years. Major road upgrading is not feasible for financial reasons. Efficient skier access to the snowfields in the future will depend on a greater emphasis on mass transit systems. As the number of winter visitors increases, buses or other forms of mass transit will replace the private car as the principal means of access to the resorts. The alternatives for mass transit systems will be evaluated and the preferred system implemented.

## VISITOR SAFETY

Visitor safety is a primary concern of the National Parks & Wildlife Service and is one of the most important factors in ski resort management. Safety is a basic consideration in ski slope and toboggan run planning, and adequate ski patrol and emergency medical services are essential. The National Parks & Wildlife Service and other responsible authorities will continue to be prepared for contingencies such as search and rescue, road accidents, adverse weather, fire and other emergencies. Careful consideration will be given to the adoption and implementation of codes and conditions relating to skier safety.

## NORDIC SKIING

The range of recreation opportunities provided in ski resorts will include nordic ski facilities. Wherever possible these facilities (e.g. marked or groomed trails) will be separated from the main ski lift areas. Facilities such as a nordic centre, competition-class nordic tracks and general touring trails may all be appropriate in some of the ski resort areas. In addition to facilities in the resorts, some basic nordic facilities will be provided at other suitable locations in the Park.

## LEASES AND CONCESSIONS

Many of the facilities within the ski resorts have been developed under a lease or other agreement between the Government and various companies, clubs, groups or individuals.

The land on which facilities have been developed under these agreements is still part of Kosciusko National Park and is controlled and managed by the National Parks & Wildlife Service.

On the expiry of any one of these agreements, there is no obligation on the Government to renew it. Decisions regarding the renewal of any expired agreement will take into account nature conservation values and the need for providing facilities for the public. The interests of lessees will of course be considered but lessees are expected to amortise their investments within the terms of each lease. This will enable future managers to have the widest possible range of planning options for nature conservation and recreation.

## SUB-REGIONAL IMPLICATIONS & TOURISM DEVELOPMENT

The outstanding scenery and natural features of the Park will continue to attract large numbers of visitors.

Sound long term planning proposals which protect these natural attractions will improve and guarantee the tourism potential of the sub-region.

Policies such as that of holding accommodation within the Park to about its present level will stimulate the economics of the towns within the sub-region. A deliberate attempt is being made to provide snow-based recreation on a Park-wide basis so that people in the sub-region have access to the snowfields from both the western and eastern sides of the Park.

The Service is anticipating and planning for increasing visitor use in the future, and additional facilities are being provided. The major stimulus to tourism that Kosciusko National Park provides will continue to require careful planning by local government and other relevant authorities within the sub-region.

## SUMMER MANAGEMENT

Approximately half of Kosciusko National Park's visitors arrive during the summer months. Wherever possible, the facilities associated with the ski resorts will be made available to the summer visitor.

## THE FUTURE OF THE RESORTS

**MOUNT SELWYN:** Mount Selwyn has been developed for beginner and family skiing with T-bars and rope tows. This emphasis for Mount Selwyn will remain, though some additional basic facilities may be added. Planning proposals for Mount Selwyn are:

The resort will operate as a day-use area only, and will cater for beginner and family skier groups.

Nordic facilities will be provided, separated from the ski lift area.

Basic facilities including shelter, food outlets, barbecue sites and car parking will be provided.

No overnight accommodation will be provided except for essential staff.

GUTHEGA: The future development of Guthega may be closely linked with planning proposals for the area south of Blue Cow Mountain. Within the existing ski resort area, it is envisaged that there will be some increase in ski lift capacity and improved facilities for day visitors, but there will be no further accommodation. Guthega will continue to be an important starting location for nordic skiers though better facilities will be provided in the future.

SMIGGIN HOLES: Apart from improvements to existing lifting facilities, no major changes are planned for Smiggin Holes. Essential facilities including food outlets, rest and shelter will be provided as they are needed. No further accommodation will be provided.

PERISHER VALLEY: Alpine skiing facilities will be expanded subject to the assessment of environmental effects. All alpine skiing facilities will be confined to the existing franchise area. Nordic facilities will be provided, and will include competition skiing trails and a nordic centre.

CHARLOTTE PASS VILLAGE: This resort is the only skiing area which is totally snowbound in most winters, and relies completely on oversnow transport for its servicing. The village was established in the very early days of skiing and is in a particularly sensitive natural environment. Stands of very old snow gum, rare native fauna habitat, unusual geological features and important alpine and sub-alpine plant communities are just some of the important natural features of the area in which Charlotte Pass Village has been developed. The village complex will be allowed to develop to approved limits of stage one of the 1976 development plan. An additional lift may be permitted in the most environmentally acceptable location. The facilities at Charlotte Pass Village will remain for the duration of the Head Lease (to the year 2015). However, because of the area's important nature conservation values, a careful and critical evaluation of future management options will be made before any decisions are taken regarding extending or renewing any leases. The preferred long term option is to phase out all developments.

THREDBO: Under the terms of existing agreements some further accommodation facilities will be provided, subject to assessment of environmental effects when completed plans are available. Continued expansion of lifting facilities to cater for alpine skiers will be permitted where these facilities are environmentally acceptable.

#### HOW TO OBTAIN MORE INFORMATION OR COMMENT ON THE REVIEW

Management planning is a difficult task, and there are bound to be differences of opinion as to the best course to take. It is important that these differences be resolved so that a clear course of action can be taken. This brochure has discussed planning proposals for the future of ski resorts in Kosciusko National Park which must be considered before the new draft plan of management is completed.

You may have other ideas, or think there are other important aspects to be considered. Whatever your views, we would like to hear from you.

Any comments should be forwarded in writing to:

The Planning Officer,  
Kosciusko National Park  
Private Mail Bag,  
COOMA, N.S.W., 2630

Alternatively, come and talk with the planning staff at:

Park Headquarters,  
Sawpit Creek  
Kosciusko National Park (phone 0648) 6.2102 between  
8.30 a.m. and 4.30 p.m., Monday to Friday

Planning priorities are such that any comment on this issue should, if possible, be received by the end of July, 1980.

copy

MRS G. THAURER  
22 HUTCHISON CRESCENT,  
KAMBAH, A.C.T., 2902

9th June, 1980

Dear Sir/Madam,

PLAN OF MANAGEMENT REVIEW KOSCIUSKO NATIONAL PARK

Are you aware that the National Parks & Wildlife Service (NPWS) has now released its Planning Issue Statement on Resort Areas and asked for comments thereon by the end of July, 1980?

You, as the holder of a lease in the Park should comment on the proposals put forward. If you do not comment now, the NPWS and other authorities will assume, and rightly so, that you agree with their proposals and policies.

Let me set out below some of what I believe to be the more contentious statements and policies in this Planning Issue Statement:

"New alpine skiing facilities within established resort areas will be limited to those required for day-use, to provide more recreational opportunities for a greater number of people .....

Major road upgrading is not feasible for financial reasons. Efficient skier access to the snowfields in the future will depend on a greater emphasis on mass transit systems. (So far no-one has been able to come up with a suitable one at reasonable cost).

**Leases & Concessions**

Many of the facilities within the Ski Resorts have been developed under a lease or other agreement between the Government and various companies, clubs, groups or individuals.

The land on which facilities have been developed under these arrangements is still part of Kosciusko National Park and is controlled and managed by the National Parks & Wildlife Service.

On the expiry of anyone of these agreements, there is no obligation on the Government to renew it. Decisions regarding the renewal of any expired agreement will take into account nature conservation values and the need for providing facilities for the public. The interests of lessees will of course be considered but lessees are expected to amortise their investments within the terms of each lease. This will enable future managers to have the widest possible range of planning options for nature conservation and recreation."

Yet another of the policies is to "ensure the highest possible design and architectural standards consistent with site values" - this prices you out of upgrading your lodge.

All of these restraints are placed on development in the park to protect the environment. Yet another policy is "that of holding accommodation within the Park to about its present level will stimulate the economics of towns within the sub-region".

I am sure you agree, all clubs and individual skiers must comment on these proposals now, it will be too late when we are once again stuck in the traffic on our way to the snowfields or we cannot get accommodation because the lodge is booked out.

Obtain your copy of the Planning Issue Statement on Resort Areas now. It is obtainable from -

The Planning Officer,  
Kosciusko National Park  
Private Mail Bag,  
COOMA, N.S.W., 2630

or the Park Headquarters at Sawpit Creek, pick it up on the Long Week End and discuss it with your fellow Club members there and then.

Arrange also for representation to the Minister for Roads, The Hon. H. F. Jensen, 34th Floor, CAGA Centre, Phillip Street, Sydney, 2000 and the Minister for Planning & the Environment, the Hon. E. Bedford, Planning Commission of NSW, 302 Castlereagh Street, Sydney, 2000.

Ask that roads be upgraded (surely the ski and tourist industry in the Snowy Mountains contribute enough to have some money put back into it). Ask that snow ploughs are sent out early enough, i.e., when it starts to snow, not when the roads are blocked; that sand be strewn on icy roads rather than just enforce the snow chain requirements.

Ask that further consideration be given to how much of the environment would be effected if more accommodation in the Park were developed.

Don't sit back and be continually dictated to by the extreme environmentalists because they are the only ones who will make the effort and put their views. Certainly we want to retain the natural beauty of the Park but I am sure with today's knowledge and technology a happy compromise can be reached between conservation and further development - it is a large Park.

Yours sincerely,

(Sgd) G. Thaurer

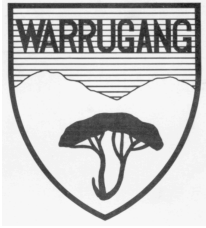
a fellow skier

p.s. Have the Ski Association represent your views as well.  
This is a numbers game!

---

DON'T FORGET THAT YOU NEED CHAINS WHEN YOU VISIT THE SNOWFIELDS,  
IF DIRECTED TO FIT CHAINS AND YOU DON'T COMPLY WITH THAT DIRECTION  
YOU CAN BE FINED TO A MAXIMUM OF \$200!!

# WARRUGANG SKI CLUB LIMITED



Please Address  
all Correspondence  
to the Secretary

Box 1075 G.P.O.

Sydney, N.S.W. 2001

## NEWSLETTER - OCTOBER, 1980

The 1980 snow season has concluded and although it seemed like the snow would be with us for much longer than usual, the weather has beaten us again and the snow is receding with the onset of a hot dry summer. Happily the skiers of Perisher Valley can look back on a most successful season and Warrugang in particular has enjoyed a major share of the success.

Unfortunately the Club added to the accident statistics for the season with Edward Vickery chalking up a broken leg which he "acquired" at the top of the No. 6 T-bar run in July. Don Widdicombe had an argument with his new skis during his second visit to the Lodge and lost. We understand that both have almost recovered from their accidents, and wish them trouble-free skiing in 1981!

As the position of Magazine Editor is temporarily vacant, the "stand-in" is unable to report on the various social highlights of the season as a whole but can report that during the first week in August a most successful fancy-dress party was staged. Into the middle of this our Manager's mother arrived fresh from England, to be greeted by festoons of balloons and crepe paper, "welcome to Warrugang mum" in crepe paper attached to the wall at the head of the entrance stairway (artistically arranged by our chief party organiser Barbie Graham), and guests arrayed in the most imaginative gear you have ever seen. A less resolute person would have turned and fled but Joyce took it all in her stride and joined in the fun! We understand from Michael and Jane she enjoyed her visit to the snow country and has returned to U.K. with happy recollections of her stay in that strange place called "Perisher Valley".

### LODGE ALTERATIONS, ETC.

We are pleased to report that a lot of complimentary remarks have been passed concerning the alterations undertaken in the Common Room and the provision of laundry facilities and guest-bathroom flowing from the reorganisation of the bathrooms adjacent to rooms 5 and 6. It certainly has made a difference to the appearance of the common room and these changes have worked well.

The Board will be considering suggestions for upgrading, etc. of the basement area of the Lodge and the recommendations of the sub-committee appointed at the Annual General Meeting in March will shortly be received.

If you have any thoughts on the matter, please write to the Board setting out what you consider would be beneficial in the arrangement of the Lodge.

### LODGE MANAGEMENT

Michael and Jane Cruise have been invited to return to the Lodge for the 1981 snow season.

### DIRECTORS

Business commitments forced Elton Squires to resign from the Board of Directors at the September meeting and Phillip Crampton accepted the Board's invitation to fill the vacancy. Elton's resignation was accepted with much regret, however, his enthusiastic support will continue over the 1981 year as Club Captain. The Board welcomes Phillip and appreciates his willingness to assist in guiding the affairs of the Club.

### LEASE OF CLUB PREMISES

The original 20-year term of the Lease document executed between the Company, the Minister for Lands and Kosciuszko State Park Trust expires on 1st January next and this company has formally applied to extend its option for a further term of ten years from that date in accordance with the provisions of the lease. Acknowledgement of the application has been received but, as yet, the specific details under which the lease is to be extended have not been advised.

#### MEMBERSHIP

From time to time members and friends request membership application forms and we take this opportunity to remind all those interested that the membership waiting list remains closed and will remain so for some time to come. However, when the Board can see it is feasible to reopen the list, adequate notice will be advertised to this effect.

#### TALENTED CHILD PROGRAMME

At short notice, N.S.W. Ski Association was advised that the Department of Sport & Recreation in N.S.W. would fund the above programme and the Association was invited to nominate 20 children, with 20 children being nominated through the Department. The criteria for nomination were - age 12 to 15 years, student at a State High School, with skiing proficiency at least to Class 2 standard Alpine and/or recognised race participation in cross-country skiing. As it was a fact that Warrugang did not boast potential Olympic-class skiers, no action was taken to call for nominations, more especially in view of the few weeks at our disposal before the closing date. It transpired that few nominations were put forward to the Association by its members and to prevent the collapse of the programme, the Association's Secretary personally contacted as many Club Secretaries and High Schools as possible, with the result that five nominations were submitted from Warrugang, four of which actually participated: The Board apologises to those members who may have been interested in submitting a nomination for their child and who were not contacted through complete ignorance as to whether or not those children came within the scope of the Department's guidelines.

The children who took part in the programme under the auspices of Warrugang were Jane Bible, Paul Draper, Ian Mace and Michael Williamson, and they were part of a contingent of 34 children who spent the first three weeks of third term resident at the National Fitness Council's camp in Jindabyne, and travelling to Thredbo for Alpine tuition and Perisher for Langlauf.

From all accounts it was an enjoyable experience but confirmed the fact that our representatives were not Olympic material. There were many shortcomings in the running of the programme and the Club will submit a resume of the opinions of the parents (and children) concerned to Ski Association and the Department for consideration when the programme is being evaluated for the 1981 year. Of course, the 1980 programme was a pilot exercise.

To enable the Club to submit nominations in good time for the 1981 season, a questionnaire will be included in the Booking Application form and members are requested to complete this to enable immediate reference to such information at the appropriate time to be made.

It is interesting to know that one of the overseas visitors to the programme, Dr Fink, from Italy, was most impressed with the physical fitness of the participants compared with children in the same age group in Europe. though quite disappointed in the level of skiing proficiency. Of the 34 children taking part, only seven were considered to be worthy of specialist ski training in the future.

#### VALLEY LIFT TICKET PRICES

N.S.W. Ski Association has made a submission to the Minister for Consumer Affairs, Mr S. Einfeld and the President has interviewed the Minister on the subject. The Association will be informed early in the new year if a P.J.T. Enquiry will be held into the matter of prices for lift tickets.

#### SKI SHOW

The 1981 Ski Show will be held at the Overseas Passenger Terminal, Circular Quay, during the period 29th/31st May.



## SECOND HAND CLOTHING & EQUIPMENT

The following is the text of a letter received from Pam Poland:-

It has recently come to my attention that ski clothing, boots, skis, etc., would be very much appreciated by Brush Farm, Lawson Street, Eastwood, 2122; telephone 858 3322.

Brush Farm provides accommodation and specialist schooling facilities for girls and boys from the age of 6 years to 21 years. This home is for intellectually handicapped children and is administered by the Department of Youth and Community Services.

I understand that the young people get a great deal of pleasure from visits organised by the Department to the Sports and Recreation Centre at Jindabyne and the snowfields and that they have visited Perisher Valley for cross-country skiing assisted by the Nordic Ski Association.

If you are able to help in this matter and it is inconvenient to take what you have to Brush Farm, I would be happy to collect the ski gear and deliver it to Brush Farm at Eastwood.

Pam's address is 1/46 Morton Street, Wollstonecraft and telephone 439-2324 at home, 230-2460 business. Should you be able to help in any way, please contact her either by telephone or calling with your contribution to her address if you can't make it to Brush Farm yourself.

## CLUB & PERISHER CUP RACE RESULTS

In spite of the very adverse conditions, the Club races were held on Saturday, 2nd August on the NASTAR Course (to the south of the No. 3 T-bar), and the Cross-Country in the afternoon on a section of the 5-K course also in very adverse conditions: Elton Squires was the organiser.

The outcome was as follows:-  
Men's Slalom - Stephen White  
Ladies' Slalom - Barbie Graham  
Men's Langlauf - Michael Loneragan  
Ladies' Langlauf - Libby Loneragan  
Men's Champion 1980 - Elton Squires  
Ladies' Champion 1980 - Barbie Graham and  
Libby Loneragan joint winners

The details are as follows:-

### NASTAR COURSE - SLALOM

conditions - snow falling soft: Pace Setter - Sigi: Time - 26.70 seconds

Men				Women			
	Run 1	Run 2	Total		Run 1	Run 2	Total
S. White	34.64	29.74	64.38	B. Graham	33.42	32.30	65.72
E. Squires	34.10	31.53	65.63	L. Loneragan	35.21	33.12	68.33
B. Thomas	14.02	32.06	66.08	B. Brown	36.61	34.11	70.72
R. Askew	33.71	32.53	66.24	A. Funnell	38.72	33.12	71.84
B. Mazlin	34.93	33.85	68.78	A. Vickery	45.29	40.95	86.24
D. Widdicombe	33.13	36.83	69.96	M. Burke	66.96	42.75	109.71
G. Brown	33.37	33.88	71.25				
N. Mahler	40.26	42.31	82.57				
H. Stevenson	49.99	40.21	90.20				
J. Bible	disq.	33.89	-				
G. Priddle	65.56	fall	-				
P. Roberts	44.27	fall	-				
M. Loneragan	fall	45.86	-				

5K Langlauf Course – in order of placing

Men

M. Loneragan  
B. Willis (member's spouse)  
H. Stevenson  
E. Squires  
P. Roberts  
B. Mazlin  
G. Brown  
G. Failes

Women

L. Loneragan  
J. Priddle (Associate Member)  
M. Roberts (Associate Member)  
B. Graham  
B. Brown  
M. Burke

Club members fared particularly well in the Martini-Rossi and Paddy Pallin Classic cross-country events held in August with Peter Roberts winning his Class in the Martini-Rossi. There were 350 entrants in this event and our representatives were Mike and Libby Loneragan, Hedley Stevenson and Brian Mazlin. In the Paddy Pallin Classic, 262 competitors took part and our representatives on that occasion were Mike Loneragan, Brian Mazlin and Hedley Stevenson. On both occasions the weather was excellent and the exciting and colourful starts were captured on film by a number of the members.

The season ended with the traditional Perisher Cup Races over the long weekend. For the first time in many years we fielded two teams – one men's, one women's. The men's team comprised Ross and Jamie Keating, Stephen and Michael White and were placed 5th in the "Plate" competition, whilst the women's team of Sally White, Alison Keating, Taffy Green and Debby Marquet (Associate), were placed 22nd in the "Bowl" competition. It appears that the women's team performed well in the Jump!! and the men's team performed well in the Slalom and Jump but found the Langlauf too strenuous. Ross was captain of the teams.

ANNUAL DINNER DANCE & PRESENTATION OF PRIZES

Enclosed is notice of the Dinner Dance to be held on Saturday, 15th November 6.30 p.m. for 7 p.m. We look forward to seeing as many members and friends as possible at this enjoyable function. Let Kaye Morrison know your reservation requirements as early as possible. (For those who don't appreciate loud noises, we understand there may be a reduction in the sound level on this occasion.)

NAVY LODGE

Navy has asked that we advertise the "End of Season Supper Dance" which has been arranged for Saturday, 25th October at the Garden Island Officers Club. Tickets are \$10/head including supper and wine, and proceeds will be donated to Ski Patrols, Twin Valley Research Programme and the Sverre Kaaten Nordic Shelter. Because of security requirements, intending guests must pay for their tickets in advance and have their names recorded on a list otherwise entry to the Naval Establishment will be denied on the evening. Anyone interested should contact Roger Pearson, 11 Stewart Street, Arncliffe, 2205 to obtain tickets.

KOSCIUSKO HUTS ASSOCIATION

The Club is a corporate member of this Association and receives regular newsletters on the Association's activities. We have recently received details of some of the 89 huts surveyed by the Association's members and should Warrugang Members be interested in obtaining such details, please let us know. The huts so far covered are – O'Keefes, Boobee, Happys, Albina, Valentine, Cootapatamba, Grey Hill Café, Horse Camp, Cascades, Tin Mine and Teddy's. We seem to be missing four of the set so far distributed but these will be obtained from the Association to bring our collection up to date.

LOST MEMBERS!

Because members change their addresses and sometimes do not notify the Club, we have currently "lost" two of our number. They are – Ray Ferguson, last heard of in Canada and Ann Cameron in Queensland. Anyone knowing their present whereabouts, the Secretary would be very pleased to hear from you.